

Developer:



LOHARUKA is one of the most experienced and reputed real estate developer and has built a reputation of providing beautiful and affordable homes for different strata of the Society. You will have a touch of experience and a flavor of innovation in each and every project of LOHARUKA.

LOHARUKA glorifies themselves not only by words but by deeds. Till now the company has completed several landmark projects in Kolkata. Currently the company is working on many projects in Kolkata, Pune and Bangalore.

The brand LOHARUKA has become very successful due to two simple philosophies "Reliability and Excellence".

"Stay happy"



URBAN GREENS - RAJARHAT, KOLKATA



FRESHIA - NARAYANPUR, KOLKATA



GREEN CITY - HANDEWADI, PUNE



LITTLE EARTH - KIWALE, PUNE



GREEN HEIGHTS - RAJARHAT, KOLKATA



GREEN CHINAR - NEWTOWN, KOLKATA



GREEN OASIS - KAIKHALI, KOLKATA



GREEN ENCLAVE - RAJARHAT, KOLKATA

Site Address :

Rajarhat Main Road, Raigachi, Bat tala, Kolkata, Kolkata-700135

Corporate Office :

LOHARUKA INFRASTRUCTURE PVT. LTD
DC-9/28, Shastri Bagar, Deshbandhu Nagar, VIP Road, Kolkata – 700059

For Sales Enquiry: +91-96082 70270

RERA NUMBER - WBRERA/P/NOR/2024/001196

e-mail: sales@loharukagroup.com www.loharukagroup.com

Disclaimer: This brochure is only a conceptual presentation and not a legal offering. The images, design, layout and sizes of the flats and the details of facilities and amenities as shown here are tentative and are subject to change at the sole discretion of developer without any reference.

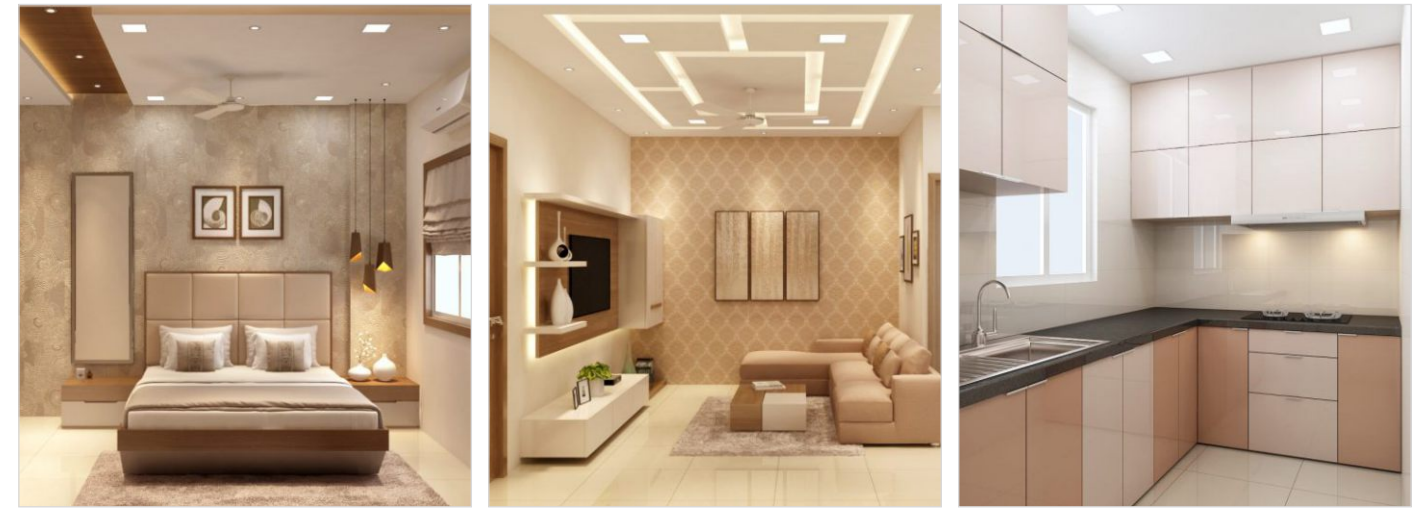
*Live Cosy
Live Green*



homes at affordable price...



*Live Comfort
Live Green*



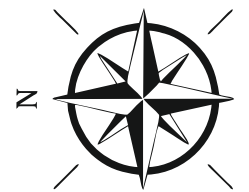
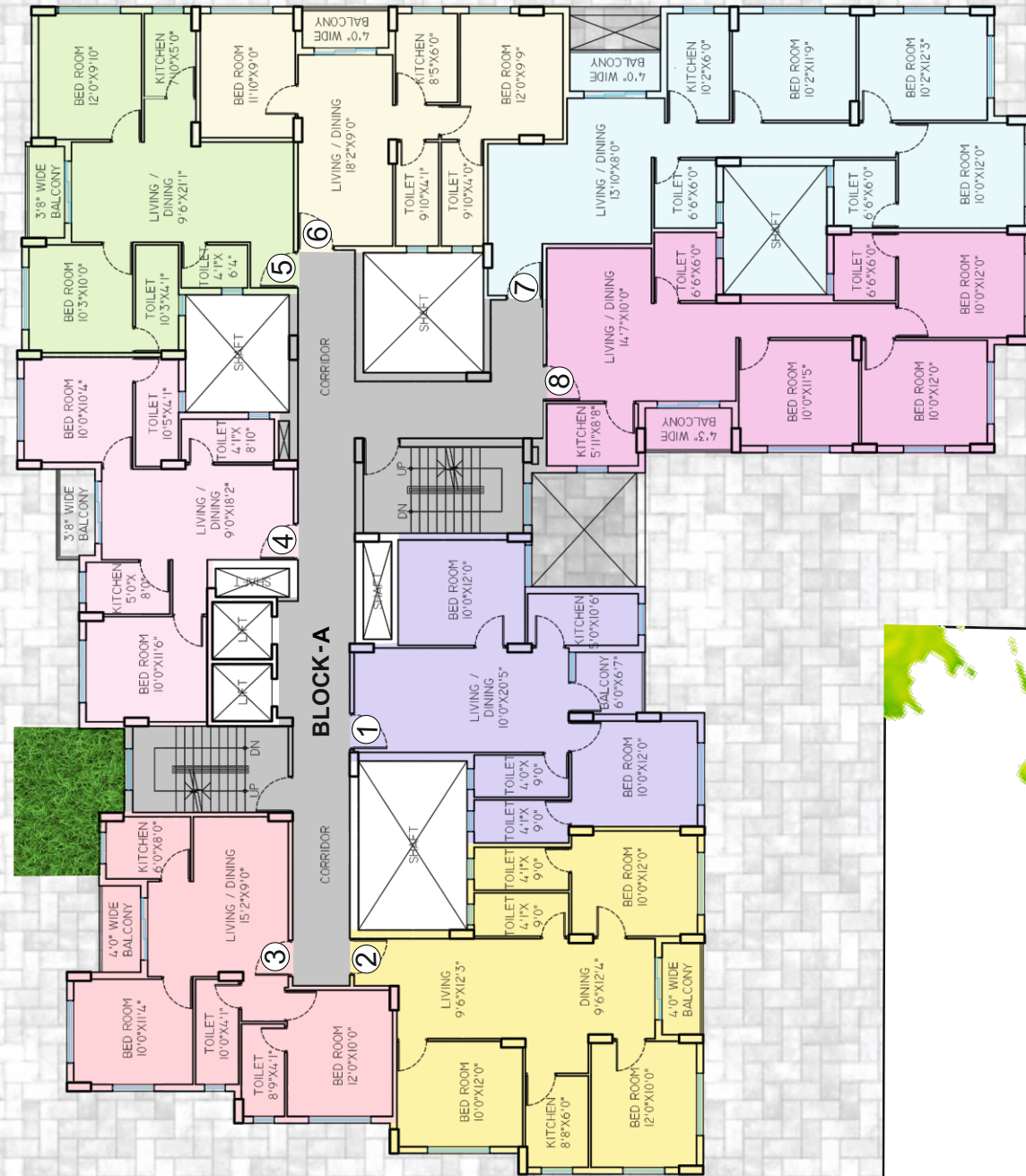
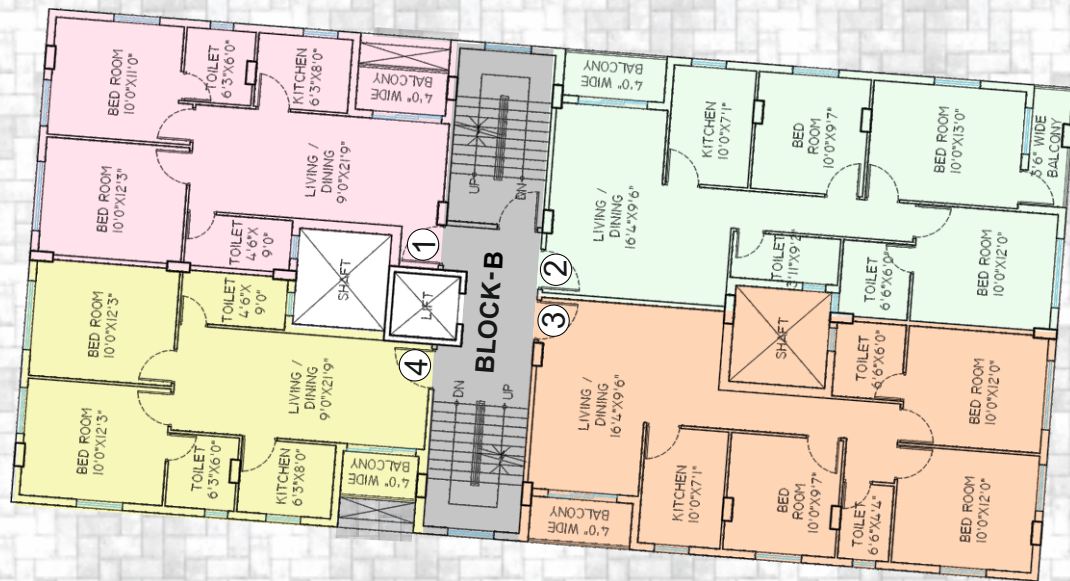
SPECIFICATIONS

- Structure:** RCC framed construction
- Internal walls:** Cement plastering overlaid with smooth impervious Plaster-of-Paris/Putty.
- Doors:** wooden door frame with 32mm thick flush door.
- Windows:** Sliding Aluminum windows with large panes and grills.
- Flooring:** Vitrified tile flooring in all bedrooms, living/ dining room and common areas.
- Kitchen:** Floor vitrified/ceramic tiles, counter tops granite with steel sink, dados ceramic tiles up to a height of 2feet from the granite top.
- Toilet:** Floor ceramic tile flooring, dados ceramic tiles up to a 6feet height.
- Sanitary ware:** White, high quality porcelain fittings. Chromium plated fittings of Jaquar or equivalent. Geyser points in all bathrooms and one washing machine point in balcony.
- Electrical:** Superior quality concealed wiring with the modular switches and miniature circuit breakers. AC Point in all bedrooms and one A.C. point in living room. TV point in Living room and master bedroom.
- Exterior:** Latest weather proof non-fading exterior finish.



BLOCK	FLAT NO.	BHK	BUILTUP AREA	CARPET AREA	BALCONY AREA
A	1	2	704	591	38
	2	3	890	786	34
	3	2	668	576	32
	4	2	636	539	31
	5	2	674	589	32
	6	2	641	564	32
	7	3	930	821	34
	8	3	895	781	35

BLOCK	FLAT NO.	BHK	BUILTUP AREA	CARPET AREA	BALCONY AREA	BALCONY - II AREA
B	1	2	691	595	30	36
	2	3	929	792	34	
	3	3	896	787	34	
	4	2	679	591	26	



with Spacious surroundings...

ROAD

ROAD

*Live Healthy
Live Green*

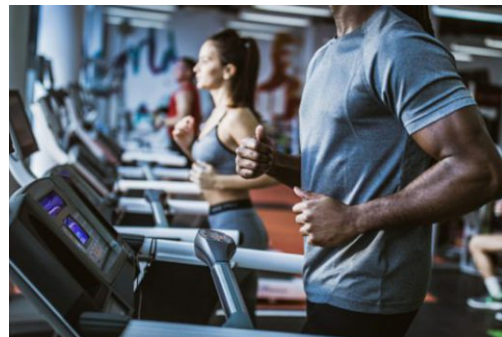


FACILITIES

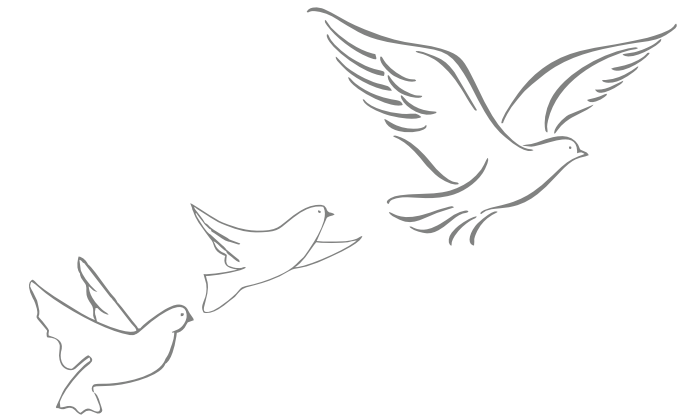
- Iron Removal Water Filtration Plant
- Fire Fighting Facility
- 24*7 Power Back-up
- CCTV Security System
- Intercom Network
- Fully Automated Lift in each block

AMENITIES

- Multipurpose Hall
- Multi Gym



*Live Luxury
Live Green*



Green Vega, a residential project, developed by LOHARUKA, is a perfect blend of healthy and luxurious life with excellent connectivity. It is a well decorated, gated community having two blocks of multistored buildings with 2/3 BHK airy & spacious apartments. It is located on Rajarhat Main Road, Raigachi, near Bat tal.

In Green Vega, we are providing a splendid decorated, landscaped and state-of-the-art terrace garden, which always tempts you to rush home after a long days hard work and retire to fresh air and open sky along with your family and rejuvenate yourself.